

We Work Together , We Grow Together!



WE ARE A COMPANY WITH A VISION!

We take pride in our network of manpower, sharing our sense of integrity to ensure all products the are delivered as committed.



SUSTAINABLE SERVICES

We offer sustainable logistics solutions that are faster, most affordable and sustainable for both our clients and customers.



TECHNOLOGY ENABLED

We embrace new digital solutions that stay off paper based logistic processes and keeps every shipment organized.



GREEN LOGISTICS

We constantly look for new green delivery methods that ensures more eco-friendly parcel delivery options.

ABOUT US

We are a purpose-driven, one stop end-to- end Logistics Solutions Provider. We collaborate closely with our clients to develop tech enabled, customized, flexible solutions that addresses their needs in highly dynamic business environments. We give shape to the world of supply-chain through innovative and sustainable solutions. Our clients trust us to manage their logistics.





OUR SERVICES



FIRST MILE SERVICES



MIDDLE MILE SERVICES



LAST MILE SERVICES



HYPERLOCAL DELIVERY



WAREHOUSING



FREIGHT FORWARDING



AIR CARGO



PACKERS & MOVERS



VALUES WE IMBIBE



SPEED

We deliver execution excellence and inform with speed.



INTEGRITY

We act with uncompromising honesty and honour commitments with integrity.



RESPECT

We treat others the way we or they want to be treated.



INFORMATION

We share information with transparency, clarity and integrity.



INCLUSIVITY

We value an inclusive work culture irrespective of race, gender or experience in the organization.



INNOVATION

We treat innovation as a premise for progress.

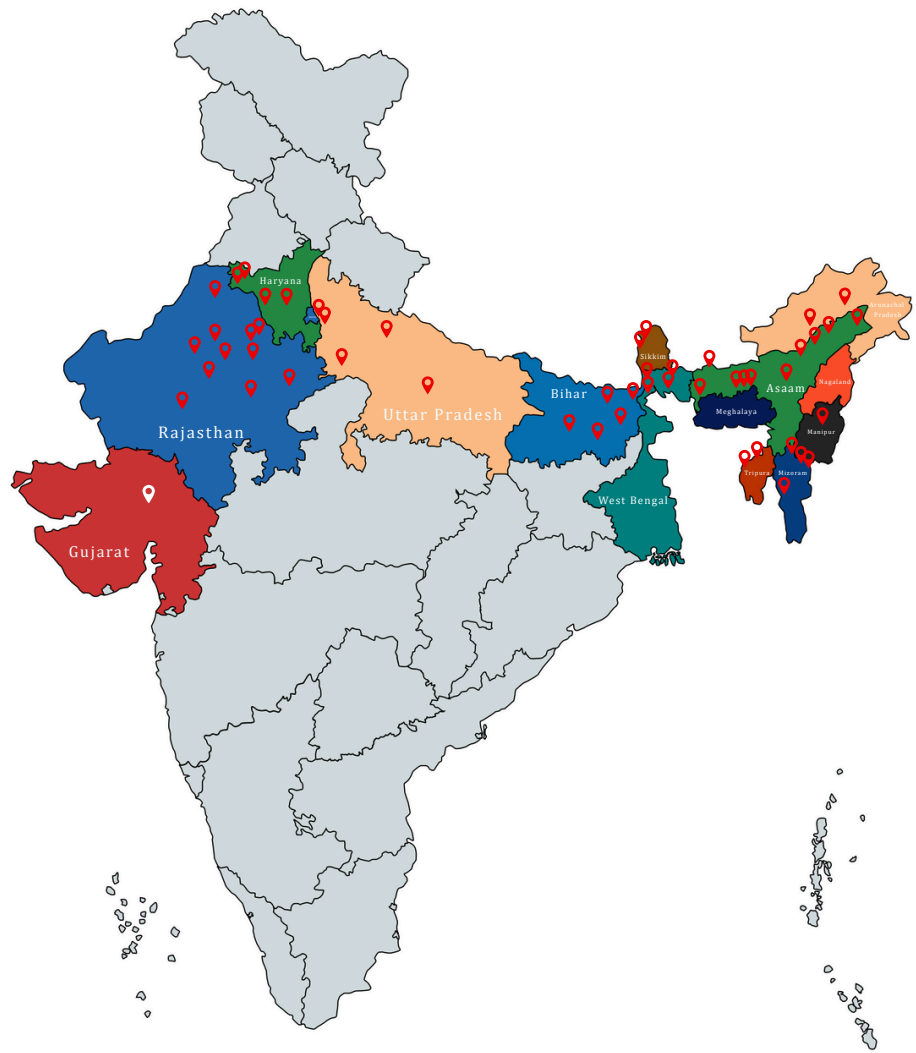
OUR VISION

To be the most preferred Logistics Solution Provider delivering superior service parameters through evolved operations embedded in leading technology and innovation by being agile, ethical, legally compliant and adaptive to the dynamic environment in the national and global markets and creating value for all stakeholders.

OUR MISSION

To be a socially responsible, dynamic company with an inclusive and diversified approach and with utmost priority to deliver for the client, maintaining security, safety and punctuality while upholding the integrity of client's product and ensuring stakeholder's profitability and growth in a secured and happy environment.

OUR FOOTPRINTS



OUR SERVICES



Our Clients

Trusted By Industry Leaders



OUR LAST MILE VEHICLES



E-CYCLE



ELECTRIC SCOOTER



MINI VAN

OUR MIDDLE MILE VEHICLES



8 foot/14 foot mini Truck



32 Feet Truck



42 Tonner Trailer Truck

DELIVERING DELIGHT

- Serving 36,000 customers each day.
- 33 Locations networked to deliver.
- 6 States keeping them connected.
- 1000+ Logistic Professionals at their best who combat all challenges.
- 3 Tech enabled business lines that provides logistic solutions.

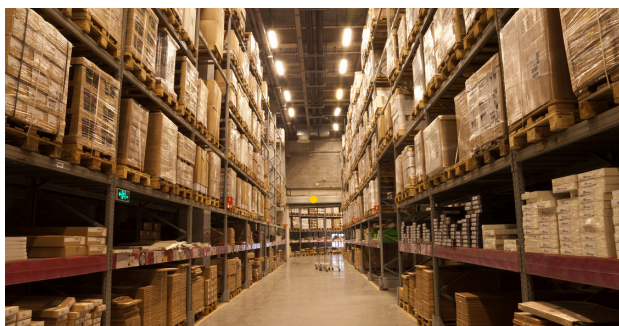
WHY CHOOSE US

- ✓ We are a trusted company with excellent track record of logistics services.
Our team comprises of
- ✓ professionals with proven expertise and backed with sound experience and education in the relevant field.
- ✓ We are transparent in our transactions and provide real- and time end-to-end visibility effective one stop Logistics Solutions.

Secure and Efficient Warehousing



Our Services



Warehousing And Storage

- We Provide Effective Storage Solutions
- Inventory Management
- 24/7 Security
- Professional Services



Cargo Handling & Packing

- Very Reasonable Pricing
- Loading & Unloading of Cargo
- Packing & Unpacking of Cargo
- Custom Related Legal Documentation



Transportation

- We Cover All Major Routes
- In-house and Attached Fleet
- All Type of Trucks Available
- FTL and PTL



Transportation

- Lease 20 and 40 Feet Containers
- We Sell New & Pre-Owned Containers
- All our Containers are of Good Quality
- We Ship Containers Pan-India

Connectivity

- **ROAD NETWORK:** Guwahati lies on the East-West Corridor (NH-27) and Asian Highway 1 & 2, making it a road logistics linchpin. Enhanced four-lane and six-lane highways are boosting cargo speed and last-mile delivery reach. Major expressways connect it to Silchar, Shillong, Itanagar, and the rest of India.
- **RAIL NETWORK:** Guwahati is connected to the broad gauge rail network, with daily freight trains to major metros like Kolkata, Delhi, and Mumbai. New freight corridors and doubling of lines are in progress, increasing cargo handling capacity. Important for bulk cargo, cement, steel, and FMCG movement.
- **AIR CONNECTIVITY:** Lokpriya Gopinath Bordoloi International Airport (LGBIA) is a major air cargo hub in the Northeast. The airport handles perishable goods, pharmaceuticals, electronics, and e-commerce shipments with increasing efficiency. A dedicated cargo terminal is under development, supporting 24/7 freight operations.
- **Inland Waterways:** National Waterway-2 (NW-2) on the Brahmaputra connects Guwahati to Haldia and Kolkata Ports. Pandu Port in Guwahati is being upgraded with Ro-Ro services and container handling capabilities. Offers cost-effective, eco-friendly cargo movement, reducing dependence on road and rail.
- **Gateway to Southeast Asia:** Guwahati plays a central role in India's Act East Policy and connects to Southeast Asian economies through the India-Myanmar-Thailand trilateral highway. Strategic proximity to the Kaladan Multimodal Transit Project, further linking northeast with seaports.

OUR INFRASTRUCTURE



- Organised Network of wide Internal Roads (12-18m) with sufficient docks.
- High security wall.
- Adequate secure parking space within the complex.
- Well designed warehouse layout for optimal use of space.
- Grade "A" warehousing with specifications conforming to NBC/market norms.
- Branded Pre Engineered buildings designed and erected by a reputed company.
- Planned approach to various essential services like fire fighting, external electrification, drainage, water supply etc.
- Emerging Logistics Parks & Warehousing. Guwahati is becoming a warehousing hub with over 1 million sq. ft. of organized storage for e-commerce, 3PL, and retail logistics.
- Technology & Digitization: Introduction of digital freight platforms, GPS tracking, and e-way bills has streamlined logistics operations.

Our Strategic Location

Our Warehouses are well located in Guwahati, Assam.

Key distances (approx) from relevant location are as follows :

S.No.	Location	Distance
1	Brahmaputra Industrial park	27 KM
2	LGBI Airport, Guwahati	09 KM
3	Agthori Yard	14 KM
4	Azara Rail Yard	7 KM
5	Pandu Port	7.5 KM
6	ICD Depot, Amingaon	11 KM
7	Guwahati Railway Station	15 KM
8	NH-37	9 KM



DATA THAT UNFOLDS OUR JOURNEY



**30+
CLIENTS**



**30K+
PACKAGES FULFILLED/DAY**



**500+
FLEET MANAGED**



**300+
PINCODES COVERED**



**2500+
DELIVERY RIDERS**



**40+
WAREHOUSE**



FUTURE FIT GREEN LOGISTICS

Our endeavour is to balance between ecology and economy. We follow a set of sustainable guidelines aimed at enhancing a Green Logistic service experience.



We use electric vehicles and bicycles as part of our last mile delivery logistics.



Our transportation management systems assist delivery route planning and prioritize load pooling to achieve higher efficiency in consolidating loads and reducing overall emissions produced by the transporting vehicles.



We encourage our packaging partners to package rationally by reusing containers and recycling packaging.



We harness solar energy to power our warehouses, driving a sustainable future and championing the Green Revolution.



Our warehouse have systematic processes for streamlining movement of consignments while improving utilization of space and minimizing scrapped products arising due to damages in freight.



We ensure that our company complies to all environmental regulations.



CAPT. MRIDUMOY DUTTA

Director

9706018575



DIPANKAR PHUKAN

Director

9706056555



SAURAV JAKHAR

Director

8861468028

LEADING THE WAY

CONTACT US



+91-7099061704



business@etashdeliveries.com



**#1 , Suchitra Tower, Ground Floor
N i j o m Path, Six Mile
G u w a h a t i , Assam - 781022**